

## Labour Force Activity October 2020

Employment in the Northwest Territories stood at 20,700 in October, a slight improvement from the previous month. This represents an employment rate of 63.5% and a 0.3 percentage point increase from September. Meanwhile the unemployment rate declined by 1.3 percentage points to 8%, with the number of unemployed persons falling by 300. These changes in the labour market reflect increases in economic activity following the relaxation of measures introduced to contain the coronavirus pandemic. In spite of these improvements, last month's employment rate was the lowest for October since collection of NWT labour market information began in 2001.

Table 1: Labour Force Statistics - Northwest Territories, 2020

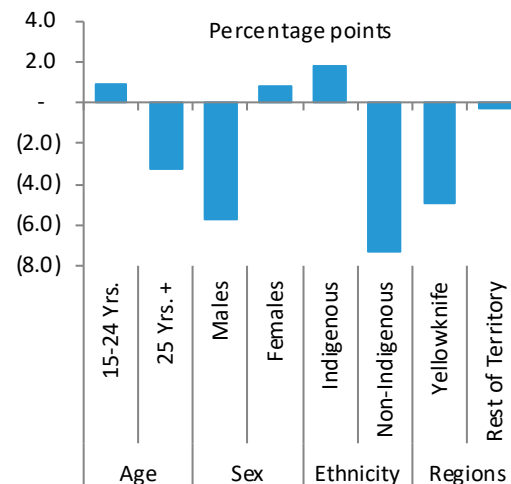
	PAST 3 MONTHS			LAST YEAR	CHANGE FROM 1 YR. AGO	
	Oct-20	Sep-20	Aug-20	Oct-19	No.	%
Population 15 & Older	32,600	32,600	32,600	32,300	300	0.9
Labour Force	22,600	22,700	23,000	23,300	(700)	(3.0)
Employment	20,700	20,600	20,400	21,300	(600)	(2.8)
Unemployment	1,800	2,100	2,600	1,900	(100)	(5.3)
Not in labour force	10,000	9,800	9,500	9,000	1,000	11.1
Participation rate (%)	69.3	69.6	70.6	72.1		
Unemployment rate (%)	8.0	9.3	11.3	8.2		
Employment rate (%)	63.5	63.2	62.6	65.9		

### Employment rates by selected characteristics

On an annual basis, the NWT labour force shrank by 700 with employment dropping by 600 persons compared to October 2019.

Overall, the employment rate dropped 2.4 percentage points from 12 months ago. Among key demographic characteristics, employment rates declined among persons aged 25 and older, males, Non-Indigenous persons and those living in Yellowknife. Increases in the employment rate for youth aged 15 to 24 years, females and Indigenous persons was a result of people leaving the labour force rather than increases in employment.

Figure 1: Changes in Employment Rates Oct 2019 & Oct 2020



## Employment by employment type, class of worker, and industry

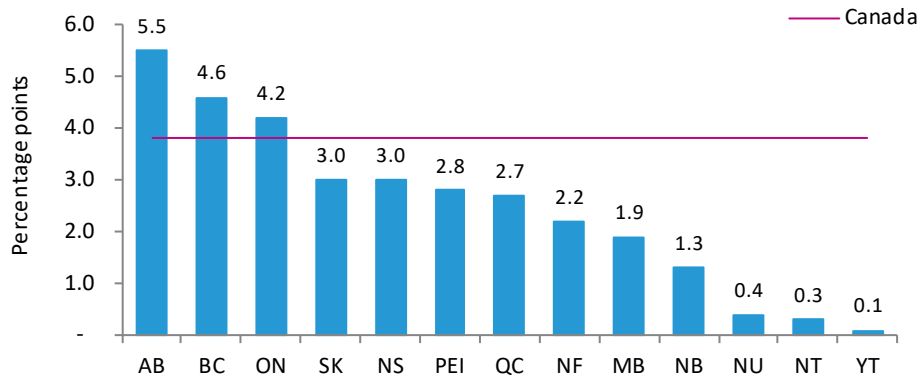
Year-over-year, employment losses were concentrated in the services-producing industry (-600), while changes in the goods-producing industry were minimal (+100).

Most of the employment losses between October 2019 and October 2020 occurred in full-time employment (-900) while part-time employment increased by 200. Over the same period, self-employment increased by 800 persons while public and private sector employment declined by 3.1% and 9.6%, respectively.

## National highlights

Nationally, the employment rate was 62.5 following a 3.8 percentage point increase from September 2020. Across the country, all provinces and territories recorded increases in employment rates. Jurisdictions that saw the highest employment rate increases were Alberta, British Columbia and Ontario, all surpassing the national average. At the same time, all three territories had the lowest increase in employment rates.

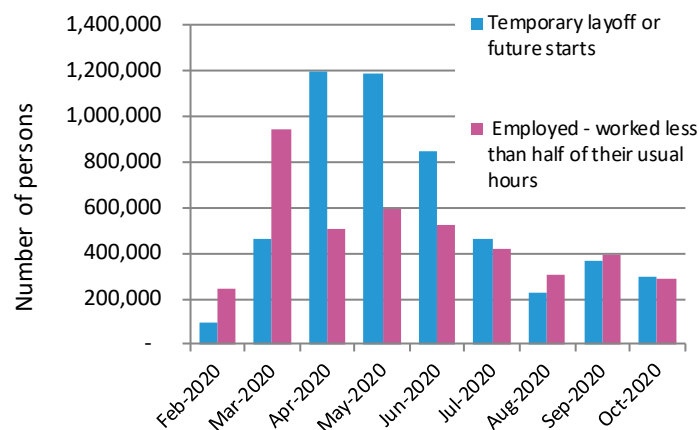
Figure 2: Changes in Employment Rates, September 2020 - October 2020



## Supplementary Indicators – Canada

Figure 3 shows how COVID-19 continues to impact the labour market. In spite of a decline, the number of laid-off workers and that of employed persons who worked less than half of their usual hours is still above pre-COVID-19 numbers.

Figure 3: Supplementary Labour Force Indicators, Canada



## Historical Labour Force Activity

The following table presents historical labour force activity in the Northwest Territories.

Table 3: Labour Force Activity -Northwest Territories

	Pop. 15 & Over	Labour force	Employed Persons	Unemploy-ed	Not in Labour force	Participat-ion rate	Unemploy-ment rate	Employe-nt rate
	Number of persons					Percent		
Oct-20	32,600	22,600	20,700	1,800	10,000	69.3	8.0	63.5
Sep-20	32,600	22,700	20,600	2,100	9,800	69.6	9.3	63.2
Aug-20	32,600	23,000	20,400	2,600	9,500	70.6	11.3	62.6
Jul-20	32,500	22,500	20,200	2,400	10,000	69.2	10.7	62.2
Jun-20	32,500	21,800	19,700	2,100	10,700	67.1	9.6	60.6
May-20	32,500	22,000	20,200	1,800	10,500	67.7	8.2	62.2
Apr-20	32,400	22,200	20,200	2,000	10,300	68.5	9.0	62.3
Mar-20	32,400	22,700	20,600	2,100	9,700	70.1	9.3	63.6
Feb-20	32,300	22,500	20,500	2,000	9,800	69.7	8.9	63.5
Jan-20	32,300	22,300	20,400	1,900	10,100	69.0	8.5	63.2
Dec-19	32,300	22,400	20,500	1,900	10,000	69.3	8.5	63.5
Nov-19	32,300	22,800	20,700	2,000	9,500	70.6	8.8	64.1
Historical for this month:								
Oct-20	32,600	22,600	20,700	1,800	10,000	69.3	8.0	63.5
Oct-19	32,300	23,300	21,300	1,900	9,000	72.1	8.2	65.9
Oct-18	32,300	23,100	21,700	1,400	9,200	71.5	6.1	67.2
Oct-17	32,400	23,400	21,800	1,500	9,000	72.2	6.4	67.3
Oct-16	32,600	24,400	22,700	1,700	8,200	74.8	7.0	69.6
Oct-15	31,900	24,100	21,900	2,200	7,700	75.5	9.1	68.7
Oct-14	32,300	23,700	21,900	1,800	8,700	73.4	7.6	67.8
Oct-13	32,600	25,200	23,300	2,000	7,300	77.3	7.9	71.5
Oct-12	32,500	25,500	23,600	1,900	7,000	78.5	7.5	72.6
Oct-11	32,300	25,100	23,400	1,800	7,200	77.7	7.2	72.4
Oct-10	32,100	23,300	22,000	1,300	8,800	72.6	5.6	68.5

For additional information and detailed tables on the labour force survey results for the Northwest Territories, visit the NWT Bureau of Statistics website at <http://www.statsnwt.ca/> or call (867) 767-9169.

Next Release: December 4, 2020